

## 5 peugeot

5.01	106
5.01	205
5.02	206
5.03	208
5.03	306/ Partner
5.04	307
5.05	404
5.07	405
5.08	504/ 505
5.10	Pickup 404-504/ T4B/ T5B
5.11	Pickup 505

# peugeot 106

● 349

Buje Barra Estabilizadora Delantera (central) - PVC Azul

Front Stabilizer Bar Bushing (central) - Blue PVC

Bucha Barra Estabilizadora Dianteira (central) - PVC Azul

▲ 106



Ø INT.  
21,00

● 350

Buje Barra Estabilizadora Delantera (central) PVC Blanco

Front Stabilizer Bar Bushing (central) - White PVC

Bucha Barra Estabilizadora Dianteira (central) PVC Branco

▲ 106



Ø INT.  
19,00

● 351

■ 5094-590

Buje Barra Estabilizadora Delantera (punta)

Front Stabilizer Bar Bushing (tip)

Bucha Barra Estabilizadora Dianteira (ponta)

▲ 106



Ø INT.  
21,00

● 352

■ 5094-590

Buje Barra Estabilizadora Delantera (punta)

Front Stabilizer Bar Bushing (tip)

Bucha Barra Estabilizadora Dianteira (ponta)

▲ 106



Ø INT.  
19,00

# peugeot 205

● 229

■ 3523-200

Buje Punta Brazo Rótula

Tip Knee Arm Bushing

Bucha Ponta Braço Rótula

▲ 205



Ø INT.  
10,00

L. INT.  
34,00

Ø. EXT.  
28,00

L. EXT.  
28,00

● 230

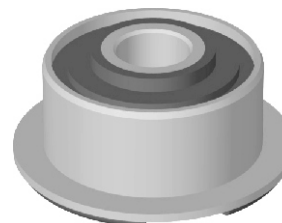
■ 3523-490

Buje Centro Brazo Rótula

Central Knee Arm Bushing

Bucha Centro Braço Rótula

▲ 205



Ø INT.  
12,00

L. INT.  
25,00

Ø. EXT.  
36,10

● 266

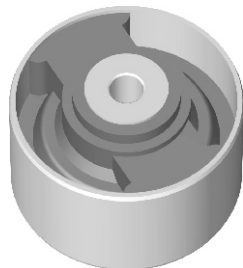
■ 1809-160

Buje Soporte Motor

Engine Support Bushing

Bucha Soporte Motor

▲ 205/ 306/ 405/ Partner



Ø INT.  
10,00

L. INT.  
53,00

Ø. EXT.  
70,00

L. EXT.  
40,00

● 342

■ 5094-400

Buje Barra Estabilizadora (color azul)

Front Stabilizer Bar (blue color)

Bucha Barra Estabilizadora (color azul)

▲ 205



Ø INT.  
23,00

● 343

■ 5094-370

Buje Barra Estabilizadora (color verde)

Front Stabilizer Bar (green color)

Bucha Barra Estabilizadora (color verde)

▲ 205



Ø INT.  
20,00

● 344

■ 5094-360

Buje Barra Estabilizadora (color blanco)

Front Stabilizer Bar (white color)

Bucha Barra Estabilizadora (color blanco)

▲ 205



Ø INT.  
17,00

# peugeot 205

## ● J. 205 (Ø23)

Juego de Bujes Suspensión Delantera (8 piezas)

Front Suspension Bushing Kit (8 pieces)

Jogo de Buchas Suspensão Dianteira (8 peças)



▲ 205

## ● J. 205 (Ø20)

Juego de Bujes Suspensión Delantera (8 piezas)

Front Suspension Bushing Kit (8 pieces)

Jogo de Buchas Suspensão Dianteira (8 peças)



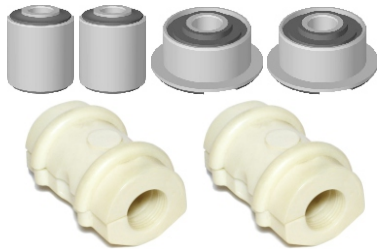
▲ 205

## ● J. 205 (Ø17)

Juego de Bujes Suspensión Delantera (8 piezas)

Front Suspension Bushing Kit (8 pieces)

Jogo de Buchas Suspensão Dianteira (8 peças)



▲ 205

# peugeot 206

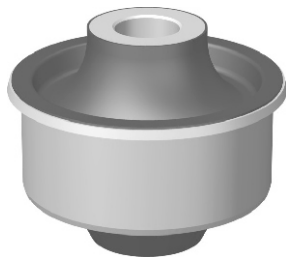
## ● 238

■ 3523-770

Buje Parrilla Suspensión Delantera (punta)

Front Suspension Arm Bushing (extreme)

Bucha Grelha Suspensão Dianteira (ponta)



Ø INT. 14,00

L. INT. 49,00

Ø. EXT. 55,00

▲ 206/ 307

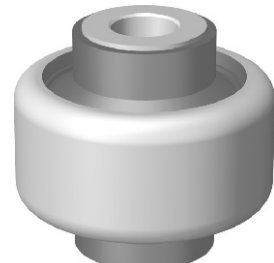
## ● 239

■ 3523-760

Buje Parrilla Suspensión Delantera (central)

Front Suspension Arm Bushing (central)

Bucha Grelha Suspensão Dianteira (central)



Ø INT. 14,00

L. INT. 50,10

Ø. EXT. 55,00

▲ 206

## ● 446

Buje Barra Estabilizadora (Nafta)

Front Stabilizer Bar (Gas)

Bucha Barra Estabilizadora (Gás)



Ø INT. 17,00

▲ 206 1999 >>

## ● 447

Buje Barra Estabilizadora (Diesel)

Front Stabilizer Bar (Diesel)

Bucha Barra Estabilizadora (Diesel)



Ø INT. 18,00

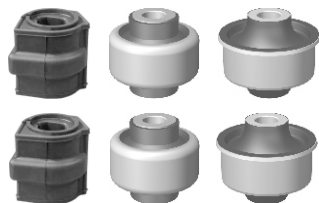
▲ 206 1999 >>

## ● J. 206 (Ø17)

Juego de Bujes Suspensión Delantera (Nafta) (6 piezas)

Front Suspension Bushing Kit (Gas) (6 pieces)

Jogo de Buchas Suspensão Dianteira (Gás) (6 peças)



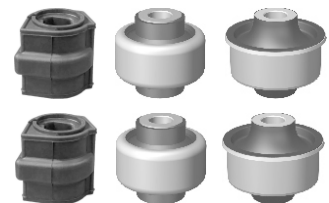
▲ 206 1999 >>

## ● J. 206 (Ø18)

Juego de Bujes Suspensión Delantera (Diesel) (6 piezas)

Front Suspension Bushing Kit (Diesel) (6 pieces)

Jogo de Buchas Suspensão Dianteira (Diesel) (6 peças)



▲ 206 1999 >>

# peugeot 208

● 439

■ Buje Parrilla Suspensión Delantera parte central  
Front Suspension Arm Bushing (central)  
Bucha Grelha Suspensão Dianteira parte central



Ø INT. 18,20  
L. INT. 58,00  
Ø. EXT. 55,00

▲ 208

● 440

■ Buje Parrilla Suspensión Delantera parte Delantera  
Front-Front Suspension Arm Bushing  
Bucha Grelha Suspensão Dianteira parte Dianteira



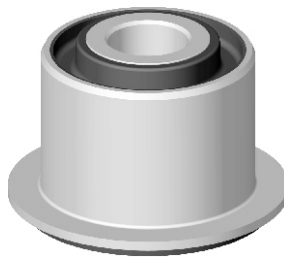
Ø INT. 18,20  
L. INT. 58,00  
Ø. EXT. 55,00

▲ 208

# peugeot 306/ Partner

● 210

■ 3523-401  
Buje Parrilla Suspensión Delantera  
Front Suspension Arm Bushing  
Bucha Grelha Suspensão Dianteira



Ø INT. 12,20  
L. INT. 31,00  
Ø. EXT. 33,20

▲ 306/ Partner

● 216

■ 3523-542  
Articulación Brazo Triángulo Delantero - Parrilla  
Front Triangle Arm Articulation - Susp. Arm  
Articulação Braço Triângulo Dianteiro - Grelha



Ø INT. 18,70

▲ 306/ Partner

● 216-A

■ 3523-541  
Articulación Brazo Triángulo Delantero - Parrilla  
Front Triangle Arm Articulation - Susp. Arm  
Articulação Braço Triângulo Dianteiro - Grelha



Ø INT. 19,60

▲ 306/ Partner

● 216-B

■ 48815-30050  
Articulación Brazo Triángulo Delantero - Parrilla  
Front Triangle Arm Articulation - Susp. Arm  
Articulação Braço Triângulo Dianteiro - Grelha



Ø INT. 19,00

▲ 306/ Partner

● 241

Buje Tensor Correa Alternador  
Tensor Bushing  
Bucha Tensor

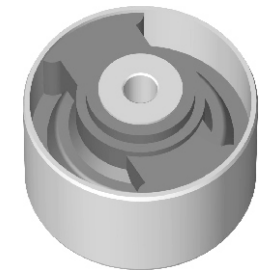


Ø INT. 17,60  
L. INT. 80,00  
Ø. EXT. 41,00  
L. EXT. 62,00

▲ 306/ 405

● 266

■ 1809-160  
Buje Soporte Motor  
Engine Support Bushing  
Bucha Suporte Motor



Ø INT. 10,00  
L. INT. 53,00  
Ø. EXT. 70,00  
L. EXT. 40,00

▲ 205/ 306/ 405/ Partner

● 416

■ 5094-650  
Buje Barra Estabilizadora  
Stabilizer Bar Bushing  
Bucha Barra Estabilizadora



Ø INT. 21,00

▲ Berlingo/ Partner

● 417

■ 5094-640  
Buje Barra Estabilizadora (central) 4/5 puertas  
Stabilizer Bar Bushing (central) 4/5 doors  
Bucha Barra Estabilizadora (central) 4/5 portas



Ø INT. 18,00

▲ 306

# peugeot 306/ Partner

● 418

■ 5094-660

Buje Barra Estabilizadora (central) M. Nuevo - 5 puertas

Stabilizer Bar Bushing (central) New Model - 5 doors

Bucha Barra Estabilizadora (central) M. Novo - 5 portas



Ø INT.  
19,00

▲ 306

● 419

■ 5094-790

Buje Barra Estabilizadora (central) M. Nuevo - 4 puertas

Stabilizer Bar Bushing (central) New Model - 4 doors

Bucha Barra Estabilizadora (central) M. Novo - 4 portas



Ø INT.  
20,00

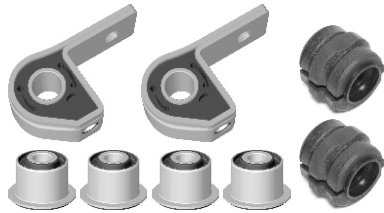
▲ 306

● J. 306 (Ø 18)

Juego de Bujes Suspensión Delantera

Front Suspension Bushing Kit

Jogo de Buchas Suspensão Dianteira



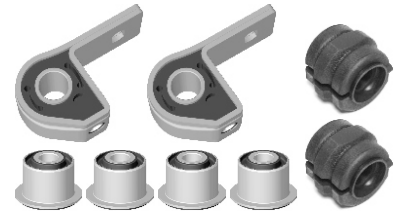
▲ 306

● J. 306 (Ø19)

Juego de Bujes Suspensión Delantera

Front Suspension Bushing Kit

Jogo de Buchas Suspensão Dianteira



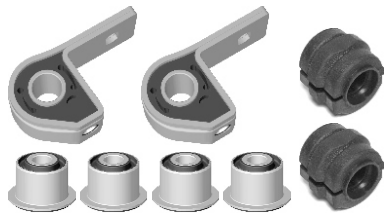
▲ 306

● J. 306 (Ø 20)

Juego de Bujes Suspensión Delantera

Front Suspension Bushing Kit

Jogo de Buchas Suspensão Dianteira



▲ 306

# peugeot 307

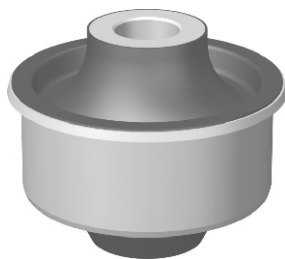
● 238

■ 3523-770

Buje Parrilla Suspensión Delantera (punta)

Front Suspension Arm Bushing (extreme)

Bucha Grelha Suspensão Dianteira (ponta)



Ø INT.  
14,00

L. INT.  
49,00

Ø. EXT.  
55,00

▲ 206/ 307

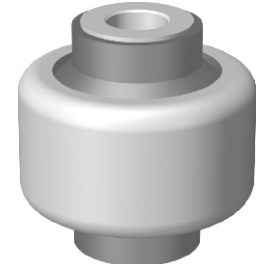
● 252

■ 3523-910

Buje Parrilla Suspensión Delantera (central)

Front Suspension Arm Bushing (central)

Bucha Grelha Suspensão Dianteira (central)



Ø INT.  
14,00

L. INT.  
56,10

Ø. EXT.  
55,00

▲ 307

● 345

■ 5094-89

Buje Barra Estabilizadora Delantera

Front Stabilizer Bar Bushing

Bucha Barra Estabilizadora Dianteira



Ø INT.  
23,00

▲ 307

● 346

■ 5094-88

Buje Barra Estabilizadora Delantera

Front Stabilizer Bar Bushing

Bucha Barra Estabilizadora Dianteira



Ø INT.  
22,00

▲ 307



# peugeot 307

## ● 347

■ 5094-87

Buje Barra Estabilizadora Delantera

Front Stabilizer Bar Bushing

Bucha Barra Estabilizadora Dianteira

▲ 307



Ø INT.  
21,00

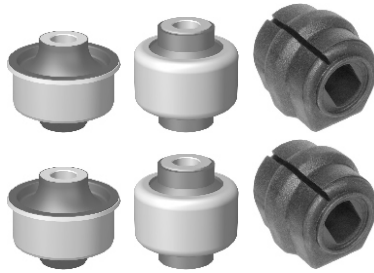
## ● J. 307 (Ø22)

Juego de Bujes Suspensión Delantera (barra Ø22)

Front Suspension Bushing Kit (Ø22 bar)

Jogo de Buchas Suspensão Dianteira (barra Ø22)

▲ 307



## ● J. 307 (Ø23)

Juego de Bujes Suspensión Delantera (barra Ø23)

Front Suspension Bushing Kit (Ø23 bar)

Jogo de Buchas Suspensão Dianteira (barra Ø23)

▲ 307



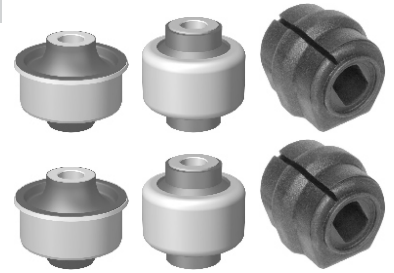
## ● J. 307 (Ø21)

Juego de Bujes Suspensión Delantera (barra Ø21)

Front Suspension Bushing Kit (Ø21 bar)

Jogo de Buchas Suspensão Dianteira (barra Ø21)

▲ 307



# peugeot 404

## ● 125

■ 3523-090

Buje Parrilla Lateral

Lateral Suspension Arm Bushing

Bucha Grelha Lateral

▲ 404/ 504/ Pickup  
404-504/ T4B/ T5B



Ø INT.  
12,00

L. INT.  
38,00

Ø. EXT.  
28,00

L. EXT.  
32,00

## ● 126

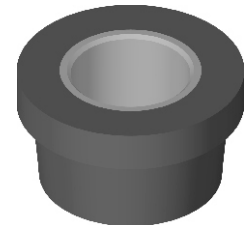
■ 3523-100

Buje Parrilla (cónico)

Suspension Arm Bushing (conical)

Bucha Grelha (cônico)

▲ 404/ 504/ Pickup  
404-504/ T4B/ T5B



Ø INT.  
16,00

L. INT.  
16,50

## ● 127

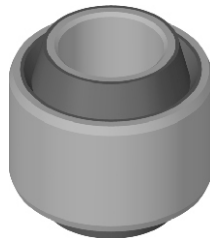
■ 5088-020

Buje Bieleta Estabilizadora Delantera

Front Stabilizer Rod Bush.

Bucha Bieleta Estabilizadora Dianteira

▲ 404/ 504/ Pickup  
404-504/ T4B/ T5B



Ø INT.  
14,00

L. INT.  
25,00

Ø. EXT.  
27,00

L. EXT.  
17,00

## ● 128

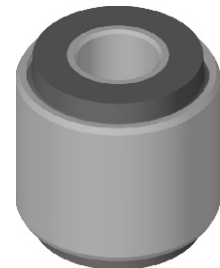
■ 5248-040

Buje Salida Cremallera y Barra Paner

Rack Exit Bush. & Paner Bar

Bucha Saída Cremalheira e Barra Paner

▲ 404/ 504/ 505/ Pickup  
404-504/ T4B/ T5B



Ø INT.  
12,00

L. INT.  
30,00

Ø. EXT.  
30,00

L. EXT.  
24,00

## ● 129

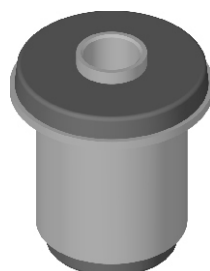
■ 3561-040

Buje Brazo Tensor Del.

Front Tensor Arm Bushing

Bucha Braço Tensor Dia.

▲ 404/ 504/ Pickup  
404-504/ T4B/ T5B



Ø INT.  
12,00

L. INT.  
50,00

Ø. EXT.  
32,00

## ● 130

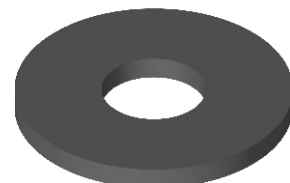
■ 3562-020

Arandela para Buje 129

Washer for Bushing 129

Arandela para Bucha 129

▲ 404/ Pickup 404-504/  
T4B/ T5B



Ø INT.  
15,00

Ø EXT.  
40,00

ESP.  
3,25

# peugeot 404

## ● 131

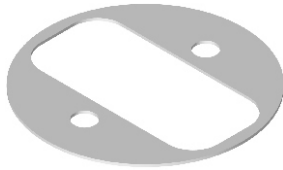
■ 4040-060

Deflector p/ Manchón de Acople

Deflecotrs for Coupling

Defletor para Manchão de Junção

▲ 404/ 504/ 505/ Pickup  
404-504/ T4B/ T5B



Ø EXT.  
80,00

## ● 140

■ 5131-040

Buje Elástico Trasero

Rear Elastic Bushing

Bucha Elástico Traseira

▲ 404/ 504/ Pickup 504/  
T4B/ T5B



Ø INT.  
16,00

L. INT  
54,00

Ø EXT.  
32,00

L. EXT.  
50,00

## ● 146

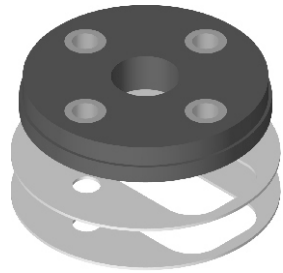
■ 4040-060

Manchón de Acople Comp.  
(con los dos deflectores)

Complete Coupling  
(with both deflectors)

Manchão de Junção  
(com os dois deflectores)

▲ 404/ 504/ 505/ Pickup  
404-504/ T4B/ T5B



Ø INT.  
8,00

Ø EXT.  
75,00

ESP.  
12,00

## ● 146-A

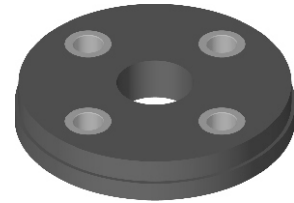
■ 4040-060

Manchón de Dirección  
(sin los dos deflectores)

Steering Coupling  
(without deflectors)

Manchão de Junção  
(sem os dois deflectores)

▲ 404/ 504/ 505/ Pickup  
404-504/ T4B/ T5B



Ø INT.  
8,00

Ø EXT.  
75,00

ESP.  
12,00

## ● 154

■ 3523-120

Buje Brazo Oscilante

Oscilating Arm Bushing

Bucha Braço Oscilante

▲ 404/ 504/ 505/ Pickup  
504-505/ T4B/ T5B



Ø INT.  
14,00

L. INT.  
44,00

Ø EXT.  
29,00

L. EXT.  
32,00

## ● 174

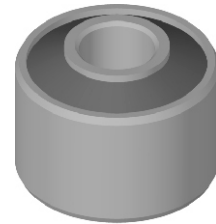
■ 5179-020

Buje Bieleta Estabilizadora  
Trasera

Rear Stabilizer Rod Bushing

Bucha Bieleta  
Estabilizadora Traseira

▲ 404/ 504/ 505



Ø INT.  
10,20

L. INT  
22,00

Ø EXT.  
27,00

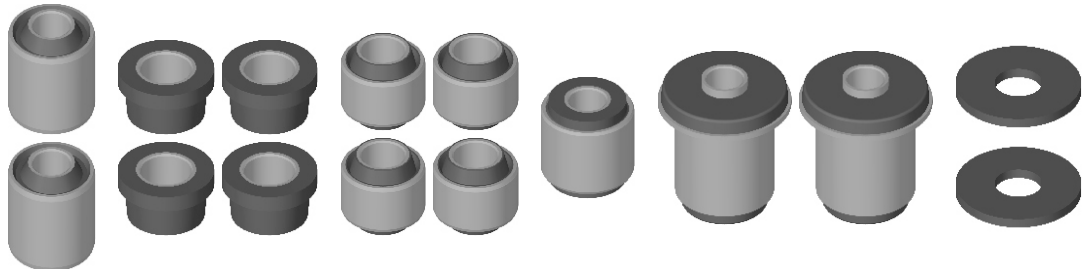
L. EXT.  
17,00

## ● J. 404/504

Juego de Bujes (15 piezas)

Bushing Kit (15 pieces)

Jogo de Buchas (15 peças)



▲ 404/ 504

## ● 159

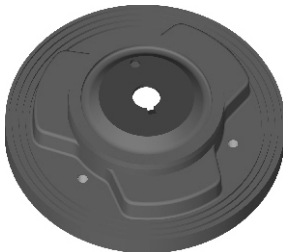
■ 5210-133

Buje Soporte Amortiguador  
Delantero (cazoleta)

Front Absorber Support  
Bushing (headstock)

Bucha Suporte Amortecedor  
Dianteira (cazoleta)

▲ 404/ 504/ 505/ Pickup  
404-504/ T4B/ T5B



Ø EXT.  
168,00

# peugeot 405

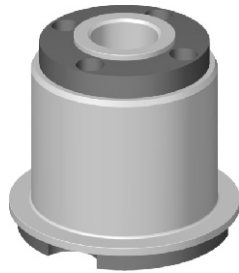
## ● 211

■ 3523-400

Buje Parrilla Delantera

Front Suspension Arm  
Bushing

Bucha Grelha Dianteira



Ø INT.  
12,00

L. INT  
38,00

Ø EXT.  
33,00

▲ 405

## ● 212

■ 3523-540

Articulación Brazo Triángulo  
Delantero - Parrilla

Front Triangle Arm  
Articulation - Susp. Arm

Articulação Braço Triângulo  
Dianteiro - Grelha



Ø INT.  
18,00

▲ 405

## ● 212-A

■ 3523-540

Articulación Brazo Triángulo  
Delantero - Parrilla

Front Triangle Arm  
Articulation - Susp. Arm

Articulação Braço Triângulo  
Dianteiro - Grelha



Ø INT.  
18,20

▲ 405

## ● 241

Buje Tensor Correa  
Alternador

Tensor Bushing

Bucha Tensor



Ø INT.  
17,60

L. INT.  
80,00

Ø EXT.  
41,00

L. EXT.  
62,00

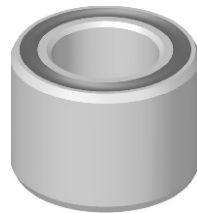
▲ 306/ 405

## ● 264

Buje Tensor

Tensor Bushing

Bucha Tensor



Ø INT.  
12,00

L. INT  
15,00

Ø EXT.  
21,00

L. EXT.  
15,00

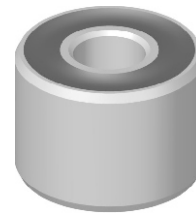
▲ 405

## ● 265

Buje Tensor

Tensor Bushing

Bucha Tensor



Ø INT.  
8,00

L. INT  
15,00

Ø EXT.  
21,00

L. EXT.  
15,00

▲ 405

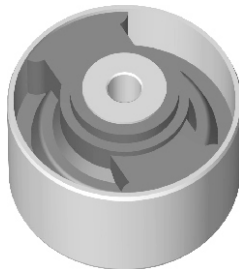
## ● 266

■ 1809-160

Buje Soporte Motor

Engine Support Bushing

Bucha Suporte Motor



Ø INT.  
10,00

L. INT.  
53,00

Ø. EXT.  
70,00

L. EXT.  
40,00

▲ 205/ 306/ 405/ Partner

## ● 348

■ 5094-340

Buje Barra Estabilizadora  
(modelo nuevo)

Stabilizer Bar Bushing  
(new model)

Bucha Barra Estabilizadora  
(modelo novo)



Ø INT.  
22,00

▲ 405

## ● J. 405

Juego de Bujes Suspensión  
Delant. (modelo nuevo) 8 p.

Front Suspension Bushing  
Kit (new model) 8 pieces

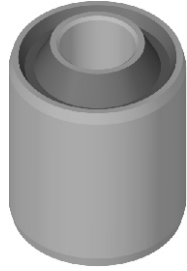
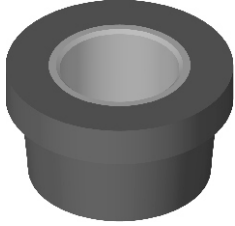
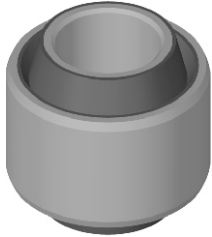
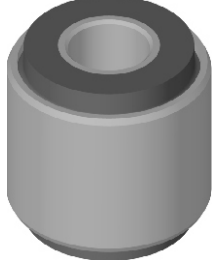
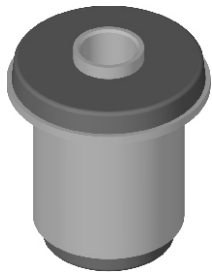
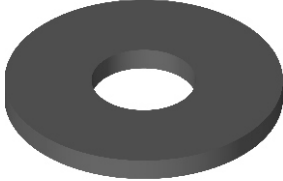
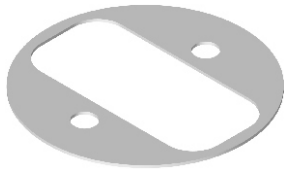
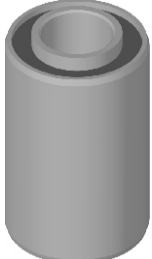
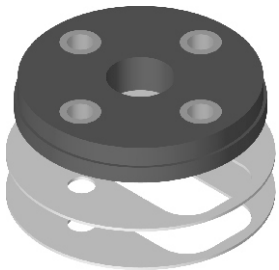
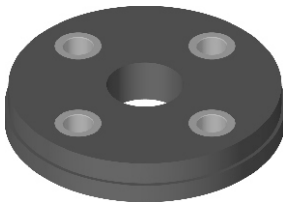
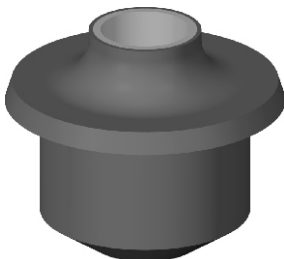
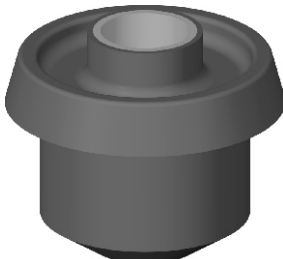
Jogo de Buchas Suspensão  
Dianteira (modelo novo) 8 p.



▲ 405



# peugeot 504/ 505

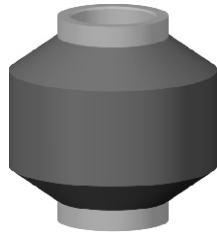
<p>● <b>125</b> ■ <b>3523-090</b></p> <p>Buje Parrilla Lateral</p> <p>Lateral Suspension Arm Bushing</p> <p>Bucha Grelha Lateral</p> <p>▲ <b>404/ 504/ Pickup</b> <b>404-504/ T4B/ T5B</b></p>	 <p>Ø INT. 12,00</p> <p>L. INT. 38,00</p> <p>Ø. EXT. 28,00</p> <p>L. EXT. 32,00</p>	<p>● <b>126</b> ■ <b>3523-100</b></p> <p>Buje Parrilla (cónico)</p> <p>Suspension Arm Bushing (conical)</p> <p>Bucha Grelha (cónico)</p> <p>▲ <b>404/ 504/ Pickup</b> <b>404-504/ T4B/ T5B</b></p>	 <p>Ø INT. 16,00</p> <p>L. INT. 16,50</p>
<p>● <b>127</b> ■ <b>5088-020</b></p> <p>Buje Bieleta Estabilizadora Delantera</p> <p>Front Stabilizer Rod Bush.</p> <p>Bucha Bieleta Estabilizadora Dianteira</p> <p>▲ <b>404/ 504/ Pickup</b> <b>404-504/ T4B/ T5B</b></p>	 <p>Ø INT. 14,00</p> <p>L. INT. 25,00</p> <p>Ø. EXT. 27,00</p> <p>L. EXT. 17,00</p>	<p>● <b>128</b> ■ <b>5248-040</b></p> <p>Buje Salida Cremallera y Barra Paner</p> <p>Rack Exit Bush. &amp; Paner Bar</p> <p>Bucha Saída Cremalheira e Barra Paner</p> <p>▲ <b>404/ 504/ 505/ Pickup</b> <b>404-504/ T4B/ T5B</b></p>	 <p>Ø INT. 12,00</p> <p>L. INT. 30,00</p> <p>Ø. EXT. 30,00</p> <p>L. EXT. 24,00</p>
<p>● <b>129</b> ■ <b>3561-040</b></p> <p>Buje Brazo Tensor Del.</p> <p>Front Tensor Arm Bushing</p> <p>Bucha Braço Tensor Dia.</p> <p>▲ <b>404/ 504/ Pickup</b> <b>404-504/ T4B/ T5B</b></p>	 <p>Ø INT. 12,00</p> <p>L. INT. 50,00</p> <p>Ø. EXT. 32,00</p>	<p>● <b>130</b> ■ <b>3562-020</b></p> <p>Arandela para Buje 129</p> <p>Washer for Bushing 129</p> <p>Arandela para Bucha 129</p> <p>▲ <b>404/ Pickup 404-504/ T4B/ T5B</b></p>	 <p>Ø INT. 15,00</p> <p>Ø EXT. 40,00</p> <p>ESP. 3,25</p>
<p>● <b>131</b> ■ <b>4040-060</b></p> <p>Deflector p/ Manchón de Acople</p> <p>Deflecotrs for Coupling</p> <p>Defletor para Manchão de Junção</p> <p>▲ <b>404/ 504/ 505/ Pickup</b> <b>404-504/ T4B/ T5B</b></p>	 <p>Ø EXT. 80,00</p>	<p>● <b>140</b> ■ <b>5131-040</b></p> <p>Buje Elástico Trasero</p> <p>Rear Elastic Bushing</p> <p>Bucha Elástico Traseira</p> <p>▲ <b>404/ 504/ Pickup 504/ T4B/ T5B</b></p>	 <p>Ø INT. 16,00</p> <p>L. INT. 54,00</p> <p>Ø EXT. 32,00</p> <p>L. EXT. 50,00</p>
<p>● <b>146</b> ■ <b>4040-060</b></p> <p>Manchón de Acople Comp. (con los dos deflectores)</p> <p>Complete Coupling (with both deflectors)</p> <p>Manchão de Junção (com os dois deflectores)</p> <p>▲ <b>404/ 504/ 505/ Pickup</b> <b>404-504/ T4B/ T5B</b></p>	 <p>Ø INT. 8,00</p> <p>Ø EXT. 75,00</p> <p>ESP. 12,00</p>	<p>● <b>146-A</b> ■ <b>4040-060</b></p> <p>Manchón de Dirección (sin los dos deflectores)</p> <p>Steering Coupling (without deflectors)</p> <p>Manchão de Junção (sem os dois deflectores)</p> <p>▲ <b>404/ 504/ 505/ Pickup</b> <b>404-504/ T4B/ T5B</b></p>	 <p>Ø INT. 8,00</p> <p>Ø EXT. 75,00</p> <p>ESP. 12,00</p>
<p>● <b>151</b> ■ <b>3561-060</b></p> <p>B. Barra Tensor (susp. del.)</p> <p>Tensor Bar Bushing (front suspension)</p> <p>Bucha Barra Tensor (suspensão dianteira)</p> <p>▲ <b>504/ 505/ Pickup 404-504-505</b></p>	 <p>Ø INT. 16,20</p> <p>L. INT. 42,00</p>	<p>● <b>151-A</b> ■ <b>3561-090</b></p> <p>Buje Barra Tensor (susp. delantera) con Arandela</p> <p>Tensor Bar Bushing (front suspension) with Washer</p> <p>Bucha Barra Tensor (susp. Dianteira) com Arandela</p> <p>▲ <b>504/ 505/ Pickup 404-504-505</b></p>	 <p>Ø INT. 16,20</p> <p>L. INT. 42,00</p>

# peugeot 504/ 505

## ● 153

■ 5088-021

Buje Bieleta Delantera  
Front Rod Bushing  
Bucha Bieleta Dianteira



Ø INT.  
12,00

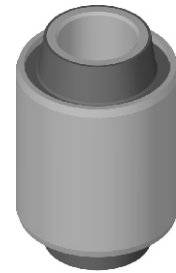
L. INT.  
30,00

▲ 504/ 505/ Pickup 404-504-505

## ● 154

■ 3523-120

Buje Brazo Oscilante  
Oscilating Arm Bushing  
Bucha Braço Oscilante



Ø INT.  
14,00

L. INT.  
44,00

Ø EXT.  
29,00

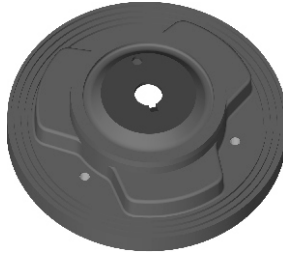
L. EXT.  
32,00

▲ 404/ 504/ 505/ Pickup 504-505/ T4B/ T5B

## ● 159

■ 5210-133

Buje Soporte Amortiguador Delantero (cazoleta)  
Front Absorber Support Bushing (headstock)



Ø EXT.  
168,00

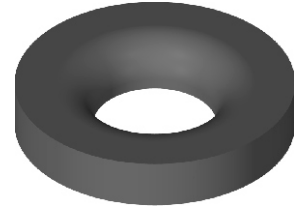
Bucha Soporte Amortecedor Dianteira (cazoleta)

▲ 404/ 504/ 505/ Pickup 404-504/ T4B/ T5B

## ● 168

■ 3524-150

Arandela para Buje 151  
Washer for Bushing 151  
Arandela para Bucha 151



Ø INT.  
22,00

Ø. EXT.  
50,00

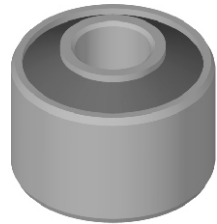
ESP.  
9,00

▲ 504/ 505/ Pickup 404/ Pickup 504

## ● 174

■ 5179-020

Buje Bieleta Estabilizadora Trasera  
Rear Stabilizer Rod Bushing  
Bucha Bieleta Estabilizadora Traseira



Ø INT.  
10,20

L. INT  
22,00

Ø EXT.  
27,00

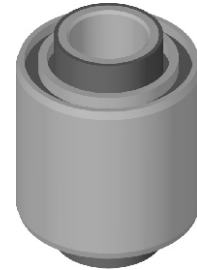
L. EXT.  
17,00

▲ 404/ 504/ 505

## ● 190

■ 3523-160

Buje Brazo Oscilante Del.  
Front Oscilating Arm Bushing  
Bucha Braço Oscilante Dianteira



Ø INT.  
14,00

L. INT.  
44,00

Ø. EXT.  
33,00

L. EXT.  
32,00

▲ 504/ 505/ T4B/ T5B

## ● 192

■ 9418003274

Buje Elástico Trasero  
Rear Elastic Bushing  
Bucha Elástico Traseira



Ø INT.  
16,00

L. INT  
70,00

Ø EXT.  
32,00

L. EXT.  
60,00

▲ 504/ 505/ Pickup 504

## ● 301

■ 5094-211

Buje Barra Estabilizadora Delantera  
Front Stabilizer Bar Bushing  
Bucha Barra Estabilizadora Dianteira



Ø INT.  
22,00

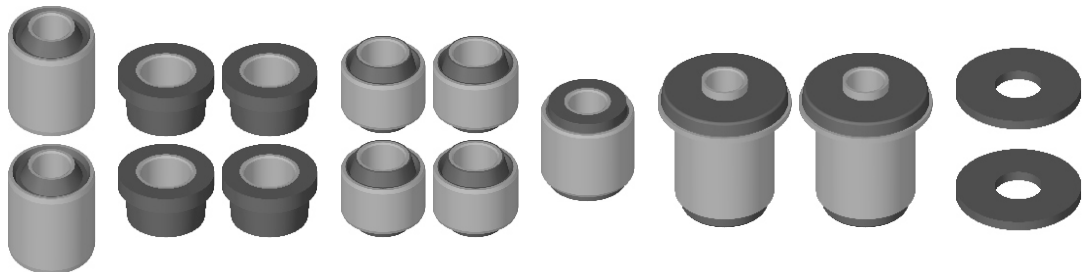
▲ 504 GR/ 505/ Pickup

## ● J. 404/504

Juego de Bujes (15 piezas)

Bushing Kit (15 pieces)

Jogo de Buchas (15 peças)



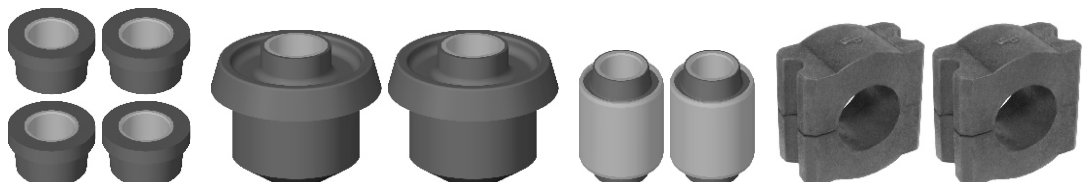
▲ 404/ 504

## ● J. 504 GR

Juego de Bujes (10 piezas)

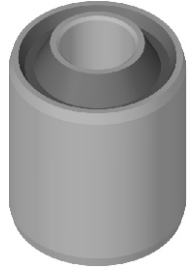
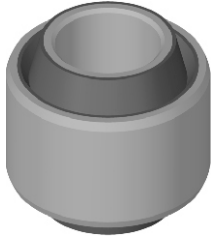
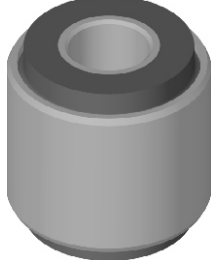
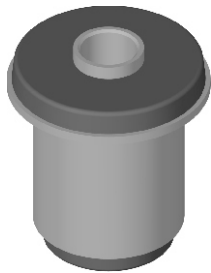
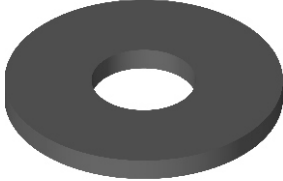
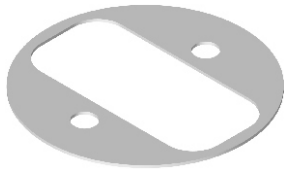
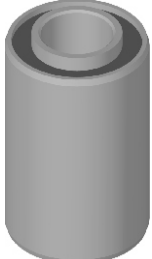
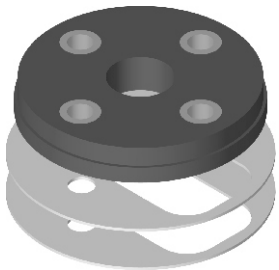
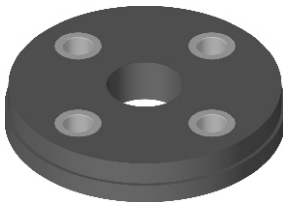
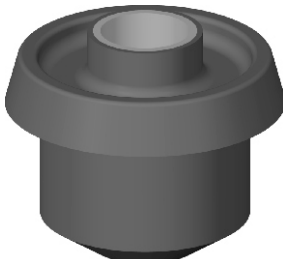
Bushing Kit (10 pieces)

Jogo de Buchas (10 peças)



▲ 504 GR 83>>

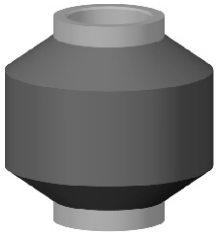
# peugeot Pickup 404/ Pickup 504/ T4B/ T5B

<p>● <b>125</b> ■ <b>3523-090</b></p> <p>Buje Parrilla Lateral</p> <p>Lateral Suspension Arm Bushing</p> <p>Bucha Grelha Lateral</p> <p>▲ <b>404/ 504/ Pickup 404-504/ T4B/ T5B</b></p>	 <p>Ø INT. 12,00 L. INT. 38,00 Ø. EXT. 28,00 L. EXT. 32,00</p>	<p>● <b>126</b> ■ <b>3523-100</b></p> <p>Buje Parrilla (cónico)</p> <p>Suspension Arm Bushing (conical)</p> <p>Bucha Grelha (cónico)</p> <p>▲ <b>404/ 504/ Pickup 404-504/ T4B/ T5B</b></p>	 <p>Ø INT. 16,00 L. INT. 16,50</p>
<p>● <b>127</b> ■ <b>5088-020</b></p> <p>Buje Bieleta Estabilizadora Delantera</p> <p>Front Stabilizer Rod Bush.</p> <p>Bucha Bieleta Estabilizadora Dianteira</p> <p>▲ <b>404/ 504/ Pickup 404-504/ T4B/ T5B</b></p>	 <p>Ø INT. 14,00 L. INT. 25,00 Ø. EXT. 27,00 L. EXT. 17,00</p>	<p>● <b>128</b> ■ <b>5248-040</b></p> <p>Buje Salida Cremallera y Barra Paner</p> <p>Rack Exit Bush. &amp; Paner Bar</p> <p>Bucha Saída Cremalheira e Barra Paner</p> <p>▲ <b>404/ 504/ 505/ Pickup 404-504/ T4B/ T5B</b></p>	 <p>Ø INT. 12,00 L. INT. 30,00 Ø. EXT. 30,00 L. EXT. 24,00</p>
<p>● <b>129</b> ■ <b>3561-040</b></p> <p>Buje Brazo Tensor Del.</p> <p>Front Tensor Arm Bushing</p> <p>Bucha Braço Tensor Dia.</p> <p>▲ <b>404/ 504/ Pickup 404-504/ T4B/ T5B</b></p>	 <p>Ø INT. 12,00 L. INT. 50,00 Ø. EXT. 32,00</p>	<p>● <b>130</b> ■ <b>3562-020</b></p> <p>Arandela para Buje 129</p> <p>Washer for Bushing 129</p> <p>Arandela para Bucha 129</p> <p>▲ <b>404/ Pickup 404-504/ T4B/ T5B</b></p>	 <p>Ø INT. 15,00 Ø EXT. 40,00 ESP. 3,25</p>
<p>● <b>131</b> ■ <b>4040-060</b></p> <p>Deflector p/ Manchón de Acople</p> <p>Deflectors for Coupling</p> <p>Defletor para Manchão de Junção</p> <p>▲ <b>404/ 504/ 505/ Pickup 404-504/ T4B/ T5B</b></p>	 <p>Ø EXT. 80,00</p>	<p>● <b>140</b> ■ <b>5131-040</b></p> <p>Buje Elástico Trasero</p> <p>Rear Elastic Bushing</p> <p>Bucha Elástico Traseira</p> <p>▲ <b>404/ 504/ Pickup 504/ T4B/ T5B</b></p>	 <p>Ø INT. 16,00 L. INT. 54,00 Ø EXT. 32,00 L. EXT. 50,00</p>
<p>● <b>146</b> ■ <b>4040-060</b></p> <p>Manchón de Acople Comp. (con los dos deflectores)</p> <p>Complete Coupling (with both deflectors)</p> <p>Manchão de Junção (com os dois defletores)</p> <p>▲ <b>404/ 504/ 505/ Pickup 404-504/ T4B/ T5B</b></p>	 <p>Ø INT. 8,00 Ø EXT. 75,00 ESP. 12,00</p>	<p>● <b>146-A</b> ■ <b>4040-060</b></p> <p>Manchón de Dirección (sin los dos deflectores)</p> <p>Steering Coupling (without deflectors)</p> <p>Manchão de Junção (sem os dois defletores)</p> <p>▲ <b>404/ 504/ 505/ Pickup 404-504/ T4B/ T5B</b></p>	 <p>Ø INT. 8,00 Ø EXT. 75,00 ESP. 12,00</p>
<p>● <b>151</b> ■ <b>3561-060</b></p> <p>B. Barra Tensor (susp. del.)</p> <p>Tensor Bar Bushing (front suspension)</p> <p>Bucha Barra Tensor (suspensão dianteira)</p> <p>▲ <b>504/ 505/ Pickup 404-504-505</b></p>	 <p>Ø INT. 16,20 L. INT. 42,00</p>	<p>● <b>151-A</b> ■ <b>3561-090</b></p> <p>Buje Barra Tensor (susp. delantera) con Arandela</p> <p>Tensor Bar Bushing (front suspension) with Washer</p> <p>Bucha Barra Tensor (susp. Dianteira) com Arandela</p> <p>▲ <b>504/ 505/ Pickup 404-504-505</b></p>	 <p>Ø INT. 16,20 L. INT. 42,00</p>

# peugeot Pickup 404/ Pickup 504/ T4B/ T5B

● **153**  
■ 5088-021

Buje Bieleta Delantera  
Front Rod Bushing  
Bucha Bieleta Dianteira




Ø INT. 12,00  
L. INT. 30,00

▲ 504/ 505/ Pickup 404-504-505

● **154**  
■ 3523-120

Buje Brazo Oscilante  
Oscilating Arm Bushing  
Bucha Braço Oscilante

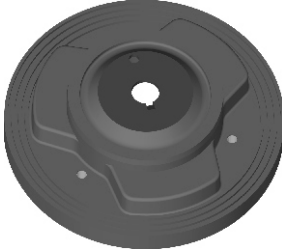


Ø INT. 14,00  
L. INT. 44,00  
Ø EXT. 29,00  
L. EXT. 32,00

▲ 404/ 504/ 505/ Pickup 504-505/ T4B/ T5B

● **159**  
■ 5210-133

Buje Soporte Amortiguador Delantero (cazoleta)  
Front Absorber Support Bushing (headstock)  
Bucha Soporte Amortecedor Dianteira (cazoleta)

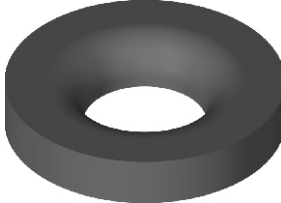


Ø EXT. 168,00

▲ 404/ 504/ 505/ Pickup 404-504/ T4B/ T5B

● **168**  
■ 3524-150

Arandela para Buje 151  
Washer for Bushing 151  
Arandela para Bucha 151

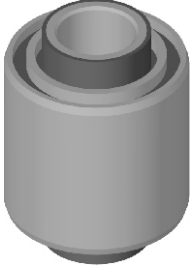


Ø INT. 22,00  
Ø EXT. 50,00  
ESP. 9,00

▲ 504/ 505/ Pickup 404/ Pickup 504

● **190**  
■ 3523-160

Buje Brazo Oscilante Del.  
Front Oscilating Arm Bushing  
Bucha Braço Oscilante Dianteira




Ø INT. 14,00  
L. INT. 44,00  
Ø EXT. 33,00  
L. EXT. 32,00

▲ 504/ 505/ T4B/ T5B

● **192**  
■ 9418003274

Buje Elástico Trasero  
Rear Elastic Bushing  
Bucha Elástico Traseira



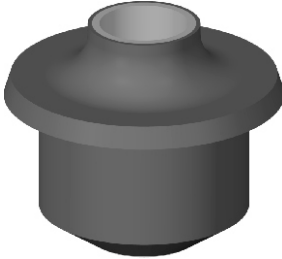
Ø INT. 16,00  
L. INT. 70,00  
Ø EXT. 32,00  
L. EXT. 60,00

▲ 504/ 505/ Pickup 504

# peugeot Pickup 505

● **151**  
■ 3561-060

B. Barra Tensor (susp. del.)  
Tensor Bar Bushing (front suspension)  
Bucha Barra Tensor (suspensão dianteira)

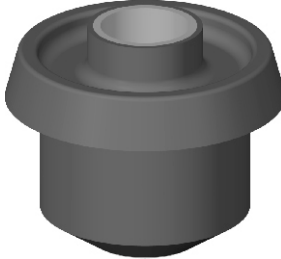


Ø INT. 16,20  
L. INT. 42,00

▲ 504/ 505/ Pickup 404-504-505

● **151-A**  
■ 3561-090

Buje Barra Tensor (susp. delantera) con Arandela  
Tensor Bar Bushing (front suspension) with Washer  
Bucha Barra Tensor (susp. Dianteira) con Arandela

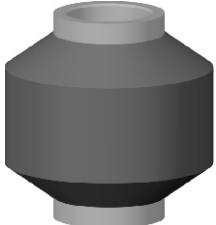


Ø INT. 16,20  
L. INT. 42,00

▲ 504/ 505/ Pickup 404-504-505

● **153**  
■ 5088-021

Buje Bieleta Delantera  
Front Rod Bushing  
Bucha Bieleta Dianteira




Ø INT. 12,00  
L. INT. 30,00

▲ 504/ 505/ Pickup 404-504-505

● **154**  
■ 3523-120

Buje Brazo Oscilante  
Oscilating Arm Bushing  
Bucha Braço Oscilante



Ø INT. 14,00  
L. INT. 44,00  
Ø EXT. 29,00  
L. EXT. 32,00

▲ 404/ 504/ 505/ Pickup 504-505/ T4B/ T5B

# peugeot Pickup 505

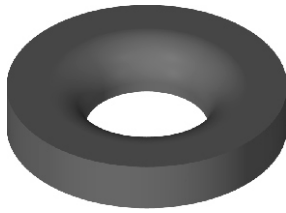
## ● 168

■ 3524-150

Arandela para Buje 151

Washer for Bushing 151

Arandela para Bucha 151



Ø INT.  
22,00

Ø. EXT.  
50,00

ESP.  
9,00

▲ 504/ 505/ Pickup 404/  
Pickup 504-505

## ● 301

■ 5094-211

Buje Barra Estabilizadora  
Delantera

Front Stabilizer Bar  
Bushing

Bucha Barra Estabilizadora  
Dianteira



Ø INT.  
22,00

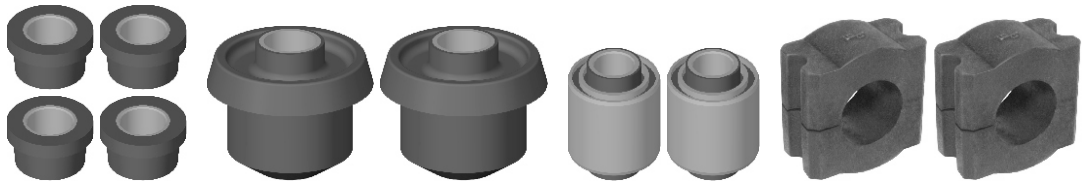
▲ 504 GR/ 505/ Pickup

## ● J. 505 Pick

Juego de Bujes (10 piezas)

Bushing Kit (10 pieces)

Jogo de Buchas (10 peças)



▲ Pickup 505